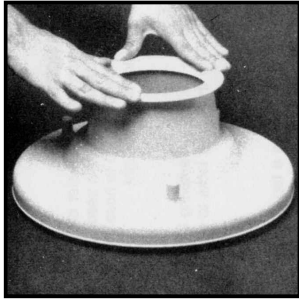
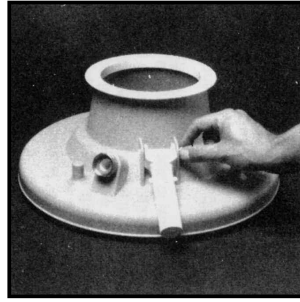


POND LEAF EATER BRUSHES for vinyl liner or hard bottom ponds WHEELS for hard bottom ponds

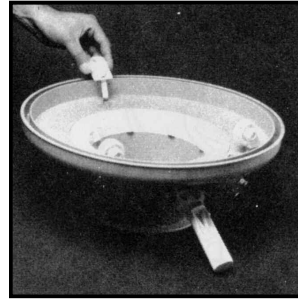
Order No. 211044



1. Press white body collar into body until snap is heard. Use firm hand pressure only, do not hammer.



2. Attach handle to body with plastic pin supplied.



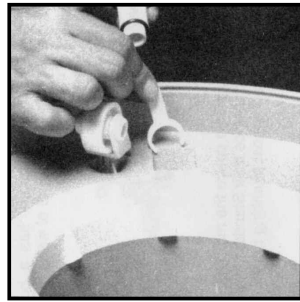
3. Wheel Model: push wheel casters (3) into holes on underside of Leaf Eater body.



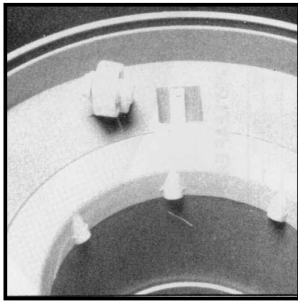
4. Brush Model: to install brushes, place one end of brush into groove then bend brush slightly while pushing downward into groove. Install short length of brush (1) to the back of the Leaf Eater (on handle side) longer brushes (2) go to the sides. Adjust openings as desired by sliding brushes in brush groove. If larger openings are wanted, simply trim the length of the brushes.



5. Install bag over top of white body collar just past the rim. Tie cord under rim, with slide bag closure.



TO REPLACE INLET HOSE FITTING OR ITS PARTS. Remove bag to prevent damage, then turn Leaf Eater over with wheels or brushes facing up. Pull retainer clip from inlet fitting groove. Remove inlet fitting from Leaf Eater body. Replace hose connector, washer and "O" ring.



Install inlet fitting in body. Push retainer clip firmly into groove.

OPERATING INSTRUCTIONS

ATTACHING GARDEN HOSE

Use a hose with a minimum inside diameter of 1/2 inch. Maximum length of 50 feet. If larger diameter hose is used, a hose of greater length may be used. Attach end of hose to hose connector on your Leaf Eater turning connector ring until tight.

ATTACHING POLE

Slide pole end over handle and squeeze spring locks together until pole slides over them. Allow the spring locks to snap into holes on pole.

GENERAL TIPS ON USE

Your Leaf Eater can be used both as a top skimmer and bottom cleaner. It will remove bugs, debris and leaves. First skim the top surface of your pond with the Leaf Eater so additional debris does not fall to the bottom of pond. Then clean pond bottom.

TOP SKIMMING

Place Leaf Eater over the edge of the pond with the bag hanging in the water and wheels or brushes facing up. Turn on water supply to hose wide open. Grasp the pole and ease the Leaf Eater into the water so one edge of the lip is just under the water surface. The water jet and bag provide floatation so the Leaf Eater may be moved about on the surface with ease. Move the Leaf Eater around over the surface keeping one edge of the lip under water towards leaves and debris on the surface. The jets of water cause action to pull debris from surface into the bag.

Sand/Silt Bags for fine debris, as well as High Capacity Bags of 5 ft. or 3 ft. in length are available from your dealer.

BOTTOM CLEANING

Place leaf Eater into pond with wheels or brushes towards the pool floor and bag in an upright position. Start at one end and move Leaf Eater across bottom. The speed you move will depend on how much debris you have and your water pressure.

EMPTYING BAG

Turn off water and place Leaf Eater over an open garbage can with wheels or brush towards can. Grasp bag and push it through the hole in the center of the Leaf Eater. Shake out the debris and pull bag back into the normal position.

STORING

When not in use, your Leaf Eater should be stored where it is protected from sunlight. Brush Model should be stored with bristles up to keep them straight.

TROUBLESHOOTING

If your Leaf Eater is not removing debris properly:

1. Be sure you have not overloaded bag. Empty if necessary.
2. Be sure you are using the proper diameter hose and recommended length.
3. Most homes are equipped with Standard Port garden hose faucets. This type of faucet has a built-in restrictor which reduces the potential volume of water available from the faucet by approximately 48%.

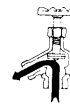
STANDARD PORT FAUCET

Approximately 48% reduction in volume of water flow.



FULL PORT FAUCET

100% volume of water flow.



Leaf Eater owners who desire the maximum volume of water from the faucet should replace their Standard Port faucet with a Full Port faucet available from most plumbing hardware suppliers.

POND LEAF EATER PARTS BREAKDOWN

Item	Part No.	DESCRIPTION
1	R18502	Body collar
2	R211426	Standard mesh bag
2A	R211286	Optional sand/silt bag
2B	R211430	High capacity bag - 5 ft.
2C	R211432	High capacity bag - 3 ft.
3	R201476	Handle with delrin spring clip
4	R03101	Handle connecting pin
5	R211316	Hose connector with washer
6	R18507	Hose inlet fitting
7	R18508	"O" Ring for inlet fitting
8	R18509	Retainer clip
11	R211436	Wheel assembly including caster 3 per bubble pack
12	R211406	Brush set (set of 3) bagged

PARTS BREAKDOWN DRAWING

